

Alias

An alias is a link to a file, folder or a disk. If you delete the alias the original copy is not affected, in addition the alias can be given a long filename and its launching can be customized. Select *File Info* to access these options for an alias icon.

You create an alias by dragging an icon to either the desktop or QuickBar. After creating the alias you can copy or move it to any open folder.

Alias icons are distinguished from normal files by their *italic* titles.

Sparta 1.5

Welcome to Sparta 1.5!



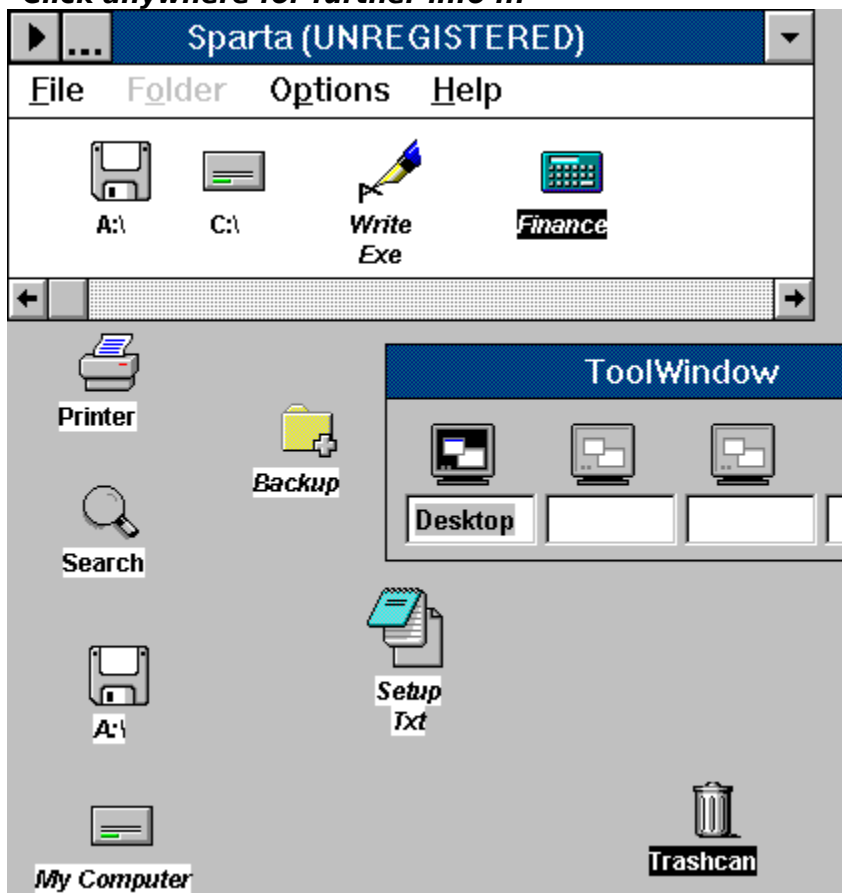
This is an unregistered version.
Please register if you intend to continue to use the Sparta 1.5.
[Register here!](#)

[Look at these features!](#)

[The most common questions answered](#)

[How to register](#)

Click anywhere for further info ...



Remember to register, if you intend to use the program. Keep the Shareware concept alive, by supporting it.

QuickBar

QuickBar is a minimal desktop. If you drag an icon onto it, an alias is automatically created.

You can hide the QuickBar by selecting the *Show QuickBar* option in the *Options* menu.

Floppy disk

Double click on the floppy disk icon to open the root folder, a green cover on the disk denotes that the floppy is already open.

Hard disk

Double click on the hard disk icon to open the root folder, a green light on the disk denotes that the root folder on the disk is already open.

Hard disk alias

An alias to a hard disk. It was created by dragging the hard disk from the QuickBar onto the desktop.

QuickLaunch

Displays a menu of the folders under the *My Programs!* folder. These folders are automatically created from the Program Manager groups when Sparta is installed and also if *Refresh Programs Folder* is selected in the *Options* menu.

Floppy disk alias

An alias to a floppy disk. It was created by dragging the floppy disk from the QuickBar onto the desktop.

Folder alias

Folder aliases are created by dragging the original folder onto the desktop or QuickBar.

File alias

File aliases are created by dragging the original folder onto the desktop or QuickBar.

Minimize all

Clears the desktop by minimizing all application except Sparta.

Trashcan

Files, folders and aliases can be dropped on the Trashcan for easy deletion.

By default the Trashcan is set to store deleted files in the trash folder, which can be accessed by double clicking on the Trashcan. If you wish to make the Trashcan delete the files instead of storing them; select *File Info* and check the appropriate option.

Aliases are always deleted.

ToolWindow

The ToolWindow expands your normal screen 4 times. By default your screen is set to screen number one, but you can select a new screen by clicking the appropriate icon on the ToolWindow.

You can hide the ToolWindow by selecting the *Show ToolWindow* option in the *Options* menu.

QuickSearch

Activates the Search for files window.

Printer icon

Use can drop files onto the Printer object and they will be printed if Windows knows how to print it.

If you drop a file onto the Printer object and nothing happens, open REGEDIT.EXE and add a printer command to the extension.

See the Windows manual for further details.

You can change the default printer be double clicking on the printer icon.

Sparta 1.5 Registration Form/Invoice

When you have registered Sparta you will receive a new registered version, lifetime support and the possibility to upgrade to future versions of Sparta.

Payment can made with:

Credit cards

Visa and MasterCard/EuroCard/Access accepted.
Please be sure to include your credit card number,
expiration date and card name.

Checks/cash

International currency only.
Checks should be made out to a US bank.
No EuroChecks please!
International postal orders accepted.

Please send all orders to:

Mail: Karl Thoroddsen, Gerdakot 4, 225 Bessastadahreppur ICELAND.
FAX: **354-5653704**

or

Internet: karlth@rhi.hi.is

Site licenses:

A site license for Sparta entitles an organization to receive one copy of the distribution package and duplicate the distribution disk for the specified number of copies.

3.5 inch disks are sent unless a 5.25 inch disk is requested.

Sparta Single Copy _____ copies at \$29 each = _____

Sparta Site License

2 to 9 computers: _____ computers at \$22 each = _____
10 to 24 computers: _____ computers at \$17 each = _____
25 to 49 computers: _____ computers at \$14 each = _____

(more than 49 copies are negotiable)

Total payment _____

Name: _____ Date: _____

Company: _____

Address: _____

City, State, Zip: _____

Country: _____

Phone: _____ Fax: _____

Electronic Mail address: _____

How did you hear about Sparta? _____

Comments:

Thank you for supporting the shareware concept.

Features

File management

Copying

Renaming

Moving

Deleting

Duplicating

Network support

Searching

Additional features

Aliases

Virtual Desktop (ToolWindow)

QuickBar

QuickLaunch

QuickSearch

Program Manager groups

Password protection

Large icon views

Small icon views

Customization

+ *much more!*

Frequently asked questions

How do I make Sparta the default shell?

Replace the **shell=progman.exe** line in *SYSTEM.INI* with **shell=sparta.exe**, make sure that the Sparta directory is in the PATH and that the PATH doesn't exceed 128 characters. If that doesn't work, add Sparta to Program Manager's **StartUp** group.

Sparta doesn't remember my chosen font or the aliases on the desktop.

These settings are stored in *SPARTA.INI* and *SPARTA.DSK*, which are located in the Windows directory. Make sure that the directory isn't full or write protected.

Sparta crashes if I use the desktop.

Make sure you aren't using any other desktop applications, like BackMenu or PCTools. Also make sure that the *DESKTOP.DLL* file is either in the PATH or the Windows directory.

Excel flashes while running Sparta.

This is caused by a conflict between Excel and Sparta. Microsoft are aware of the problem and are hopefully working on it.

Sometimes the icons do not respond to functions even though they are selected.

Click on the offending icon once with the left mouse button and try again.

Why doesn't Sparta convert all the Program Manager Group items?

If two or more Group items point to the same file, only the first Group item is converted into an alias.

What are these SPARTA._V_ files?

They are placed in each folder you open, to store its position and aliases. If you want you can change whether Sparta uses them, by selecting the appropriate option in *Folder Information/Where?* in the Customization dialog.

How do I uninstall Sparta?

Delete the Sparta directory.

Delete *SPARTA.INI*, *SPARTA.DSK* and *SPARTA.BNR* from the Windows directory.

Delete *SPARTA._V_* from each directory.

Copying

Copy files, folders and aliases by dragging the source icon into the target folder, while holding down the **Ctrl** key.

Moving

Copy files, folders and aliases by dragging the source icon into the target folder.

Folder

In DOS speak: "Directory!"

Renaming

Rename files and folders by selecting *Rename* from either the Right mouse button popup menu or application menu.

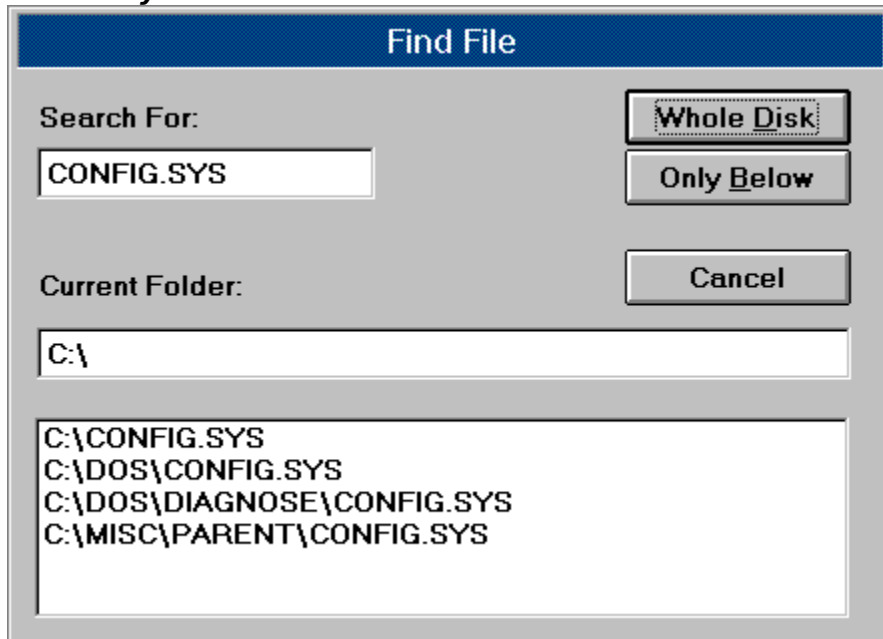
Duplicating

Duplicate files by selecting *Duplicate* from either the Right mouse button popup menu or application menu.

Searching

To activate the search you can select *Search* from the application menu or double click on the QuickSearch icon on the desktop.

Click anywhere for further info ...



The image shows a 'Find File' dialog box with a blue title bar. The search criteria are 'CONFIG.SYS' and the search scope is 'Whole Disk'. The current folder is 'C:\'. The search results list four files: 'C:\CONFIG.SYS', 'C:\DOS\CONFIG.SYS', 'C:\DOS\DIAGNOSE\CONFIG.SYS', and 'C:\MISC\PARENT\CONFIG.SYS'. There are buttons for 'Whole Disk', 'Only Below', and 'Cancel'.

Search For:	Scope
CONFIG.SYS	Whole Disk

Current Folder:	Action
C:\	Cancel

Search Results
C:\CONFIG.SYS
C:\DOS\CONFIG.SYS
C:\DOS\DIAGNOSE\CONFIG.SYS
C:\MISC\PARENT\CONFIG.SYS

Search the whole disk

Searches the whole disk.

Search below

Searches the disk, starting in the folder specified in the *Current Folder* field.

Files found

Lists the result of the file search. If you double click on a list entry a folder containing the file is opened with the file selected.

Current folder

Specifies the current folder. If you select *Only Below* the search will start in this folder.

Search for

What to search for. Wildcards are allowed so for example ***.DSK** would find all files with a **.DSK** extension.

Program Manager Groups

Sparta supports Program Manager groups. When Sparta is started for the first time it converts all Groups into folders and all all Group items into aliases.

These newly created folders are kept in the **MyPrograms!** folder which Sparta creates automatically on the desktop. **MyPrograms!** is an alias folder which points to the DOS directory **Programs** which is stored below **Sparta's** directory.

If new Groups are added to the Program Manager, you can update the group folder by choosing *Refresh Programs Folder* in the *Options* menu.

Passwords

Sparta allows you to password protect the following items: Folders, drives, QuickBar and Searching.

This is **not** high security protection because everything can still be opened in DOS or other file managers.

The folder and drive passwords are stored in the **SPARTA._V_** file which is located in the appropriate folder.

The QuickBar and Searching passwords are stored in the **SPARTA.INI** file.

Customize options

Click anywhere for further info ...

Customize Sparta

General

- Close parent folder
- GetAttribute errors
- Close folder on use
- Indicate subfolders
- Short small views

Folder information

Where?

- Everywhere
- Hard disk only
- Nowhere

Hide information file?

- No
- In folders
- In DOS

Search Password

Old Password:

New Password:

Retype Password:

QuickBar Password

Old Password:

New Password:

Retype Password:

OK

Cancel

QuickBar password

This password secures the opening of the QuickBar. The password itself is stored unencrypted in the **SPARTA.INI** file.

Close parent folder

Closes the parent folder if a subfolder is opened.

Search password

This password secures the Sparta searching mechanism. The password itself is stored unencrypted in the **SPARTA.INI** file.

GetAttribute errors

If checked Sparta tries to read the attributes of every drive for added security. This option should be left unchecked if the computer is on a network.

Close folder on use

Closes the folder if an application is launched within it.

Indicate subfolders

If checked this option displays a **Plus** sign on each folder which contains subfolders. Leave unchecked if your priority is performance.

Short small view

If checked this option displays filesize and date information on each icon in *Small icon* view. Sparta has to be restarted for changes to take effect.

Folder information, Where?

Tells Sparta where to place the **SPARTA._V_** files.

Everywhere:

Place them everywhere, i.e. on the hard disk and Network drives.

Hard disk only:

Place them on the hard disk only.

Nowhere:

Don't use information files.

Information files(**SPARTA._V_**) are placed in each folder to store among other things the folder position, size, aliases and password information.

About Sparta



Sparta was designed, using OO methods and written in 100% C++ and machine code, by Karl Thoroddsen.

For the latest info on Sparta, visit the WWW page <http://www.rhi.hi.is/~karlth/sparta.html>.

Thanks to everyone who made this project possible, including Microsoft for delaying Windows 95 and Apple for not suing. :-)

Visit Iceland!

Folder information, Hide?

Tells Sparta whether to hide the **SPARTA._V_** files.

No:

Treat them as normal files.

In folders:

Only hide them in Sparta, they are still visible in other applications.

In DOS:

Hides them completely.

Information files(**SPARTA._V_**) are placed in each folder to store among other things the folder position, size, aliases and password information.

